

## Wall Charts as Art



Science became a work of art at the Marine Biological Laboratory this summer in an exhibit featuring 15 lifesize reproductions of zoological wall charts from a collection in the MBL/WHOI Library Archives. The exhibit, entitled “Wall Charts as Art,” is on display in the Meigs Room at the Swope Center, where it provides a striking visual backdrop as members of the MBL community gather for dinners, lectures, and other events.

The 15 reproductions are selections from a series of 116 charts produced from 1877 to 1892 by Rudolf Leuckart, Professor of Zoology and Parasitology at the University of Leipzig, Germany. Noted for their detail, these charts were used as teaching aids in universities around the world. The MBL/WHOI Library Archives has one of the few remaining complete collections of the original chromolithographs.

The exhibit was created by Ann Weissmann, Exhibitions Consultant at the New York Historical Society and long-time member of the MBL community. “These charts are very rare, very beautiful, and extremely well preserved,” she says. “They are specimens of art in addition to being specimens of zoology.”

Weissmann and her husband, MBL Trustee Dr. Gerald Weissmann, have been coming to Woods Hole in the summer since 1970. Weissmann became interested in the archives several years ago and wanted to find a way to make the collections more visible to the public. “I thought this was one of the hidden treasures of the institution,” she says, “and using the Meigs Room as an exhibit space seemed like an ideal way to showcase some of the gems of the collection.”

“Wall Charts As Art” is the second in what Weissmann hopes will be a long series of exhibits featuring the Archives collections. The first exhibit she put together, “Highlights from the MBL Archives,” told a photographic history of the MBL. Several of those photographs now decorate the walls of the Director’s office in Candle House.

As the Exhibition Curator for the MBL/WHOI Library, Weissmann particularly wants to exhibit collections that illustrate the rich history of the MBL scientific community. While Leuckart himself never taught at the MBL, many of his students did come here to teach and do research, including Charles Whitman, the MBL’s founding director. The 15 charts reproduced for the exhibition were selected to show species that have been used for research here at the MBL.

The Archives’ collection of Leuckart Wall Charts was completed in the early 1990s by a gift from Dr. Louis Herlands, a 1977 MBL Physiology course alum and veteran of the MBL summer community. By 1996, the entire collection had been scanned and made available on the web. With thousands of hits on the Leuckart webpage each month, Library Director Cathy Norton says the charts are “no longer an oddity,” but are once again “actively used in curricula world-wide.” In the future, Norton says she would also like to see each of the Archives exhibits digitized and put on the web.

The next exhibit Weissmann has planned from the Archives will be “Cook’s Expeditions: the Art of Exploration,” which will feature excerpts from the collection of original journals and drawings from the three expeditions of the renowned 18<sup>th</sup> century explorer, Captain James Cook.

— Angela Damery

## Science News

*From The Ecosystems Center...*

### Publications:

Gough, L., P. A. Wookey, and G. R. Shaver. 2002. Dry heath arctic tundra responses to long-term nutrient and light manipulation. *Arctic, Antarctic, and Alpine Research* 34: 21-218.

McClelland, J. W., and J. P. Montoya. 2002. Trophic relationships and the nitrogen isotopic composition of amino acids in plankton. *Ecology* 83:2173-2180.

Schmidt, I. K., S. Jonasson, G. Shaver, A. Michelsen, and A. Nordin. 2002. Mineralization and allocation of nutrients by plants and microbes in four arctic ecosystems: responses to warming. *Plant and Soil* 242:93-106.

Stuedler, P. A., D. C. Garcia-Montiel, M. C. Piccolo, C. Neill, J. M. Melillo, B. J. Feigl, and C. C. Cerri. 2002. Trace gas responses of tropical forest and pasture soils to N and P fertilization. *Global Biogeochemical Cycles* 16:10.1029/2001GB001394.

*From the Marine Resources Center...*

Sunila, I., N. A. Stokes, R. Smolowitz, R. C. Karney, and E. M. Burreson. 2002. *Haplosporidium costale* (seaside organism), a parasite of the eastern oyster, is present in Long Island Sound. *J. Shellfish Res.* 21(1):113-118.

Roger Hanlon gave the invited plenary talk at a Gordon Conference on “Neuroethology: Behavior, Evolution & Neurobiology” at Oxford University in August. The title of his presentation was “The Ethoneurology of Adaptive Coloration and Intelligence in Cephalopod Molluscs.”

*Miscellaneous Science News and Publications...*

### Publication:

Jaffe, L. F. 2002. On the conservation of fast calcium wave speeds. *Cell Calcium*. 309:1-13.

### Symposium:

Linda Deegan, of The Ecosystems Center, is on the organizing committee of the “Symposium on Effects of Fishing on Benthic Habitats: Linking Geology, Biology, Socioeconomics, and Management,” to be held on November 12-

*continued...*

## Gifts and Grants

**The Milton L. Shifman Scholarship Trust** contributed \$564,502 to the existing Milton L. Shifman Endowed Scholarship. This scholarship provides support for Dartmouth students in summer courses and/or Dartmouth students working with MBL investigators in their labs.

**Universal Imaging Corporation** contributed \$40,000 in support of the Universal Imaging Corporation fellow, Dr. Fred Chang, and also the Mitchison/Salmon group, who did research at the MBL this summer.

**Massachusetts Environmental Trust** awarded \$20,389 to fund the first year of the Sandplain Biodiversity Management Program. The MBL will examine the effects of sandplain biodiversity management techniques on the quality of water delivered to the groundwater aquifer and an adjacent coastal great pond on Martha's Vineyard.

**Sholley Foundation, Inc.** awarded \$20,000 to support the continuing research on cephalopods at the Marine Resources Center.

**The New York Times Company Foundation** renewed funding in the amount of \$10,000 for the MBL's Science Journalism Program.

**Applied Biosystems** awarded \$10,000 to help underwrite the expenses for a new course titled Advances in Genome Technology and Bioinformatics. This course is being offered by the MBL and The Institute of Genome Research.

**The National Institutes of Health** awarded the following grants:

- \$969,024 (over 5 years) for the course, "Embryology." Joel Rothman is the principal investigator.
- \$617,540 (over 5 years) for the course "Neuroinformatics." Partha Mitra is the principal investigator.
- \$229,950 for "3-D Image Restoration for Polarized Light Microscopy." Rudolf Oldenbourg is the principal investigator.
- \$228,927 for "Testing Molecular Evolutionary Consequences of Endosymbiosis." Jennifer Wernegreen is the principal investigator.
- \$126,115 for the course, "Training in Methods in Computational Neuroscience." William Bialek is the principal investigator.
- \$45,750 for the course, "Physiology: Cellular and Molecular Biology." Lenny Dawidowicz is the principal investigator.

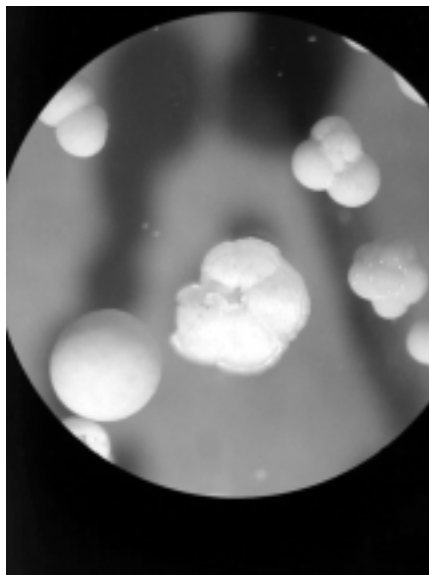
**The National Science Foundation** awarded the following grants:

- \$2,699,971 (over 4 years) for "Trophic cascades and interacting control processes in a detritus-based aquatic ecosystem." Linda Deegan is the principal investigator.
- \$1,648,366 (over 5 years) for "Biogeochemical Tracers in Arctic Rivers: Linking the Pan-Arctic Watershed to the Arctic Ocean." Bruce Peterson is the principal investigator.
- \$342,774 for "Turnover and Retention of Nitrogen in an Arctic Watershed: Links to Organic Matter Accumulation and Response to Climate." Gaius Shaver is the principal investigator.
- \$80,111 for the course, "REU: Marine Models in Biological Research." Lenny Dawidowicz is the principal investigator.
- \$8,000 for "LTER: Plum Island Sound Comparative Ecosystem Study (PISCES): Effects of Changing Land Cover, Climate and Sea Level on Estuarine Trophic Dynamics." Charles Hopkinson is the principal investigator.

**Alternatives in Research and Development Foundation (ARDF)** awarded \$15,000 for "Regulation of p53 Gene Family Expression in Clam Leukemia Cells." Carol Reinisch is the principal investigator.

**NASA** awarded \$104,696 for the "Planetary Biology Internship." Lynn Margulis is the principal investigator.

**The Department of Energy** awarded \$224,399 for "Development of Metabolic Pathway Database for the Metal Reducing Bacterium, *Shewanella oneidensis* MR-1." Monica Riley is the principal investigator.



## ESL Workshop Offered This Fall

The WHOI-MBL International Committee is sponsoring an ESL (English as a Second Language) workshop for personnel who are interested in serving as English tutors for the benefit of international staff and students.

The workshop will take place on **Friday, October 4**, at noon in room 509 of the Clark Building (Quisset Campus). It is open to any MBL employee who has an interest in tutoring MBL international staff and students. All interested staff are welcome to attend.

Please contact Pat Micks, (508) 289-7537, pmicks@mbi.edu, for information.

## MBL/WHOI Library News

Over the next year, the MBL/WHOI Library plans a complete redesign of its space and services to better serve the scientific community. With the trend toward Web-based information access and the dearth of physical space to house its print collection, the Library will be moving toward a highly robust electronic environment for the delivery of scientific information. Some literature that is seldom used locally will be placed in off-site storage with an associated document retrieval and delivery service. Additionally, due to reduced budgets and runaway serials price inflation, the Library is preparing for journal cancellations in 2003. After studying use patterns for print and online titles, the Library selectors have arrived at two lists of journals: one that replaces print subscriptions with online access only, and a second list of proposed titles for cancellation. Because of the interdisciplinary nature of scholarship in Woods Hole, the Library is providing these lists for comment by the scientific community. To view these lists and to submit comments, please see <http://www.mblwhoilibrary.org/news/cancelled.html>.

---

*Science News, from page one*

14, 2002, in Tampa Florida. The meeting, for scientists, managers, and fishing industry representatives will focus on ensuring sustainable fisheries and healthy, diverse ecosystems by advancing the scientific knowledge available to evaluate and manage fishing activities that affect ocean floor habitats.

The symposium is sponsored by the American Fisheries Society, the Ecological Society of America, the National Oceanic and Atmospheric Administration, and the US Geological Survey. For more information visit: <http://walrus.wr.usgs.gov/bh2002/>.

## Benefits Buzz

The MBL will host two Financial Education Seminars on **Wednesday, October 23, 2002**, in Whitman Auditorium, from 5:30 to 7:00 PM.

### RETIREMENT FLEXIBILITY STRATEGIES FOR MANAGING YOUR INCOME

This seminar will help you to:

- plan for retirement
- invest your retirement savings
- withdraw your retirement savings
- learn about taxes and how they affect your retirement income

### INVESTING IN A VOLATILE MARKET

This seminar will help you to:

- react to market fluctuations
- know when and what to act on when the market moves
- remember positive opportunities during downward movements
- learn about other factors that affect your wealth-building

Both seminars are open to the Falmouth Community. Reservations are required. To make a reservation, please visit the TIAA-CREF website at [www.tiaa-cref.org/moc](http://www.tiaa-cref.org/moc) or call 800-842-2733, ext. 7019.

Contact Linda Snow x7122 if you have any questions.

## Important Benefits Phone Numbers and Web Sites

Are you missing a health or dental card? Are you looking for a new physician or dentist? Do you need to check the cost of a prescription drug? Would you like to update your beneficiary information on your life insurance plans? Are you searching for a daycare provider? Do you or a family member need counseling support for a drug or alcohol problem? Do you need an insurance quote?

Here are the numbers and websites you need:

**Blue Cross Blue Shield** [www.BCBSMA.com](http://www.BCBSMA.com)  
Customer Service 1-800-241-0803

**Delta Dental** [www.deltadental.com](http://www.deltadental.com)  
Customer Service 1-800-872-0500

**Unum** [www.Unum.com](http://www.Unum.com)  
Life and Long Term Disability Insurance  
*For life insurance beneficiary changes see Human Resources*

**Unum Life Balance Program** [www.lifebalance.net](http://www.lifebalance.net)  
(password and ID is lifebalance)  
Employee Support Services 1-800-854-1446

**TIAA-CREF** [www.tiaa-cref.org](http://www.tiaa-cref.org)  
Retirement and supplemental retirement plans  
Telephone Counseling Center 1-800-842-2776

**Gosnold-Counseling Center**  
1-800-649-8115

**Met Life** [www.metpay.com](http://www.metpay.com)  
Group Auto and Home Insurance  
1-800-GET-MET8

## New Employees

Please welcome the following new employees:

**Erica Corson**, Research Assistant, Bay Paul Center  
**Martha Delaney**, Research Assistant, MRC  
**Jennifer Hsieh**, Research Assistant, Bay Paul Center  
**Joshua Herbeck**, Post-doctoral Scientist, Bay Paul Center  
**Scott Lindell**, Aquaculture Research Associate, MRC  
**Jenny Lusk-Yablick**, Research Assistant, MRC  
**Samantha Mansfield**, Web Editor/Designer, Communications  
**Linda McCauley**, Research Assistant, MRC  
**Yuriko Yano**, Post-doctoral Scientist, The Ecosystems Center

## An Important Message from the MBL's Equal Employment Opportunity Coordinator

### *Mandatory Substance Abuse Workshop to be Held in October*

Are you or someone you know having a problem with drugs or alcohol? Is that someone a coworker or a family member? In October, the MBL's EEO office will be focusing on maintaining a drug-free workplace.

The MBL is concerned about the the health and safety of all employees. Employees who are not caught up in the cycle of drug abuse can form better relationships with their co-workers and work together as a team. Employees who do not have to worry about drug-dependent family members are better able to come to work each day and perform their jobs. This is why the U.S. Government passed the Drug-Free Workplace Act of 1988, which requires that recipients of federal grants or contracts make every effort to maintain a drug-free workplace.

We can maintain a drug-free workplace by increasing employee awareness about the dangers of drug abuse. Therefore, in October, our employee-assistance-program provider, ROI Associates, will run a workshop on the "Dangers of Drug Abuse in the Workplace." Because MBL is a recipient of federal grants, **this training is mandatory for all employees.** It will be offered on two separate occasions to employees and once, to supervisors.

The first session for employees will be held on **Tuesday, October 22**, from 10:30 to 11:30 AM, in Whitman Auditorium; the second session will be held on **Wednesday, October 30**, from 1:30 to 2:30 PM, in Whitman Auditorium. The workshop for supervisors will be held as part of the Staff Council Meeting on **Wednesday, October 30**, at 9:00 AM.

You may think this training is unnecessary, and I hope, in your case, that's true, since drug addiction can be a very debilitating condition. However, I need to certify your attendance at this workshop to insure your awareness of MBL's drug-free workplace policy and your knowledge of the resources available to those who need help. I believe this program can provide each of us with a better understanding of the seriousness of drug and alcohol dependency in the workplace and how it can be prevented.

— Jane MacNeil  
eoo@mbl.edu

# October 2002 Calendar

## Wednesday, October 2

### BUMP/MBL Seminar Series

"A model of the sensory world of larval reef fishes"

Jelle Atema, BUMP

Candle House 104/105, Noon

## Tuesday, October 8

### NLM/MBL Course

"Article Alerting Services"

Lillie 103, 12:00-1:00 PM

To register, please contact Jean Monahan,

jmonahan@mbl.edu or x7341.

## Wednesday, October 9

### BUMP/MBL Seminar Series

TBA

Cathy Bevier, Colby College

Lillie Auditorium, Noon

## Friday, 11 October

### SES Distinguished Scientist Seminar Series

"The microbial connection in terrestrial ecosystem function"

Mary Firestone, University of California, Berkeley

Lillie Auditorium, 3:00 PM

## Monday, October 14

MBL Holiday – Columbus Day

## Tuesday, October 15

### NLM/MBL Course

"Locating Health Science Information"

Lillie 103, 12:00-1:00 PM

To register, please contact Jean Monahan,

jmonahan@mbl.edu or x7341.

## Wednesday, October 16

### BUMP/MBL Seminar Series

"Acropora palmata: The endangered giant of the Caribbean"

Lillie Auditorium, Noon

## Friday, 18 October

### SES Distinguished Scientist Seminar Series

"Global alteration of river quality at the anthropocene"

Michel Meybeck, University of Paris

Lillie Auditorium, 3:00 PM

## Wednesday, October 23

### BUMP/MBL Seminar Series

TBA

John Finnerty, Boston University

Candle House 105, Noon

## Friday, October 25

### SES Distinguished Scientist Seminar Series

"The effects of biodiversity on ecosystem functioning"

Osvaldo Sala, University of Buenos Aires

Lillie Auditorium, 3:00 PM

## Tuesday, October 29

### NLM/MBL Course

"Introduction to PHP"

Lillie 103, 12:00-1:00 PM

To register, please contact Jean Monahan,

jmonahan@mbl.edu or x7341.

## Wednesday, October 30

### BUMP/MBL Seminar Series

TBA

Sarah Cohen, Harvard University

Whitman Auditorium, Noon

### October Meetings and Courses

9/29-10/1, Tufts Physiology Retreat

9/29-10/6, Medical Informatics Course

10/1-10/3, UMass Joint Basic Sciences Retreat

10/3-10/5, Tufts Molecular Cardiology Research Institute

10/6-11/2, Advances in Genomic Technology and Bioinformatics Course

10/10-10/19, Optical Microscopy Course

10/13-10/19, Groundwork, Inc.

10/20-10/25, Zeiss

10/27-11/3, RUNN (Review and Update of Neuroscience for Neurosurgeons)

## Congratulations to the 2002 Photography/Photomicrography Contest Winners!

### GRAND PRIZE OVERALL

**"Invasion Pores and Membrane"**

Umit Ali Kayisli, Yale University

### Scientific Imaging:

#### FIRST PRIZE:

**"Developing Central Nervous System of *Limulus polyphemus*"**

Beate Mittmann, Institut für Biologie, Berlin

#### SECOND PRIZE:

**"Zebrafish Cardiovascular System"**

Jonathan Muyskens, University of Oregon, Institute of Neuroscience

#### THIRD PRIZE:

**"Pancreatic Islet"**

Jakob Wikström, Biocurrents Research Center

#### HONORABLE MENTION:

**"Bacterial Clusters"**

Koty Sharp, University of California, San Diego

**"Vestibular Spinal Neurons in the Goldfish Brain"**

Steven Zottoli, Williams College

### MBL-at-Large Category

#### FIRST PRIZE:

**"Belly of the Beast"**

Mara Conrad, Hunter College

#### SECOND PRIZE:

**"Seawater on Tap"**

Andrew Barry, MBL Community Member

#### THIRD PRIZE:

**"Squid Grid"**

Herb Luther, MBL

#### HONORABLE MENTION:

**"Dogfish Foam"**

Andrew Barry, MBL Community Member

**"Future Marine Models"**

JoAnna DeNobile, Irina

Chaikhoutdinov, Lydia Louis, Hunter College

