

## Behavioral Ecologist Joins Staff of Marine Resources Center



*Dr. Gabriele Gerlach explores the genetic basis of behavior using zebrafish as a model*

The MBL's Marine Resources Center welcomed a new Associate Scientist this spring. Dr. Gabriele Gerlach, a specialist in behavioral ecology and population genetics, is using the zebrafish facilities at the MRC to explore the genetic basis of

behavior. She hopes that her research will eventually establish zebrafish as a model organism for "knowing what genes are good for."

Zebrafish, which have become a favorite tool for developmental biologists, are a particularly good model for Gerlach to use because most of the genetic work has already been done. With the genome nearly complete and hundreds of markers identified, she will be free to focus her efforts on behavioral studies.

Gerlach's research will reinforce an overall goal of MRC programs in striving to link ecology, sensory biology, behavior, and the genetic basis that underlies it all. "Those links are the integrative biology approach that we use in the MRC," says MRC Director Dr. Roger Hanlon. "[Gerlach] is an excellent fit for the direction we are going."

Gerlach also sees her work as representative of the increasing significance of behavioral ecology and biology in the context of the modern genomics. "Sometimes people think of behavioral ecologists as a little old fashioned, out there swimming around, you know, watching the geese, and having a good time," says Gerlach. "But now that so much is known about the genome, I think behavioral biology is becoming important again."

Gerlach hopes to be able to track down a link between genes and the behaviors they control by comparing the natural behavior of wild-type, or "normal," zebrafish to the behavior of fish with specific known mutations. To do this, however, she will need to find out more about what their natural behavior really is. Although zebrafish are widely used as a laboratory research model, Gerlach has found that few researchers know much at all about this fish's behavior in a natural environment.

For the past five years, Gerlach has specialized in behavioral ecology and population genetics as an Assistant Professor at the University of Konstanz in Konstanz, Germany. She received her doctorate in 1990 from the Universities of Freiburg and Konstanz.

—Angela Damery

## Science News

*From the Bay Paul Center...*

Amaral Zettler, L. A., F. Gómez, E. R. Zettler, B. G. Keenan, R. Amils, and M. L. Sogin. 2002. Eukaryotic diversity in Spain's River of Fire. *Nature* 417: 137.

*From The Ecosystems Center...*

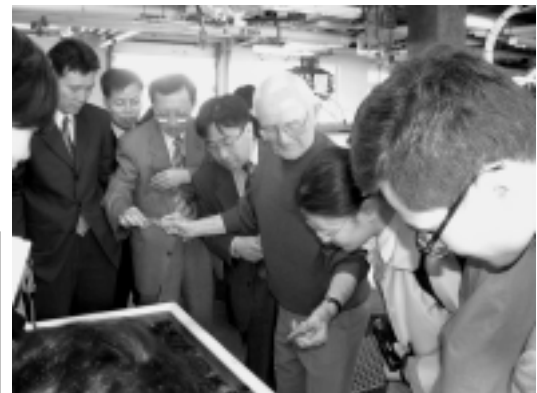
Hughes, J. E., L. A. Deegan, J. C. Wyda, and A. Wright. 2002. An index of biotic integrity based on fish community structure applied to Rhode Island and Connecticut estuaries, pp. 49-58 in M. Van Patten (ed.), Proceedings of the Fifth Biennial Long Island Sound Research Conference 2000. Connecticut Sea Grant Publication CTSG-01-02, Stamford, Connecticut.

Hughes, J. E., L. A. Deegan, J. C. Wyda, M. J. Weaver, and A. Wright. 2002. The effects of eelgrass habitat loss on estuarine fish communities of southern New England. *Estuaries* 25(2): 235-249.

Hughes, J. E., L. A. Deegan, M. J. Weaver, and J. E. Costa. 2002. Regional application of an index of estuarine biotic integrity based on fish communities. *Estuaries* 25(2): 250-263.

*From the Marine Resources Center...*

Basil, J.A., G. B. Lazenby, L. Nakanuku, R. T. Hanlon. 2002. Female *Nautilus* are attracted to male conspecific odor. *Bull. Mar. Sci.* 70(1):217-225.



*Volunteer tour guide Howard Redpath leads a group of scientists from the Korea Ocean Research and Development Institute through the Marine Resources Center.*

## Medical Emergency Procedures Revisited

In the event of a medical emergency, please follow these procedures:

**Call 9-911 immediately** when a person experiences any of the following symptoms:

- Chest pains
- Shortness of breath/difficulty breathing
- Altered level of consciousness
- Syncope/fainting spell
- Diabetic reaction
- Hemorrhaging

Private transportation should be avoided when there is a serious injury that could be aggravated by movement or a condition that might deteriorate en route to the hospital.

A person experiencing distress will almost certainly not want you to call 911. You must disregard their wishes if there is any indication that an EMT is needed. They can always refuse care from the emergency medical personnel later..

**Questions?** Contact Andy Mattox, x7424, [amattox@mbl.edu](mailto:amattox@mbl.edu)

## A Message from the Equal Opportunity Employment Coordinator

As EEO Coordinator for the MBL, it is my job to maintain awareness within our Community of the federal and state laws and MBL policies concerning social issues such as diversity, discrimination, affirmative action, sexual harassment, drug abuse, and the entitlements of persons with disabilities and veterans. One way I believe this can be accomplished is by my providing an on-going column in the *MBL Monthly*. I hope that the information you find here will help to keep you mindful of your own rights, to broaden your perception of the rights of others, and to make our working together at the MBL a more rewarding experience. I'd appreciate feedback on any of the items I present and, please, don't hesitate to come and see me if you have a concern about any of these issues.

Jane MacNeil  
EEO Coordinator  
Homestead 109  
eeo@mbledu, x7378

The Town of Falmouth has met with the Anti-Defamation League (ADL) to consider becoming part of their program called "No Place to Hate." It is a statewide campaign that empowers New England communities to challenge anti-Semitism, racism, hate, and bigotry of all forms. To date, 50 Massachusetts cities and towns are participating in the program, and leaders within the Falmouth community would like to join them. The program would begin with Falmouth signing a commitment to organize three anti-bias programs that will actively challenge hate and bigotry over the next 12 months. Then local committees choose from 30 community-based activities recommended by ADL and ideally incorporate them into community programs already in place such as the road race or fireworks display. These committees would be made up of volunteers from schools, law enforcement, social services, senior citizens, and all others within the Town of Falmouth, which includes Woods Hole.

If you would like to participate in this worthy endeavor, please consider joining one of these committees or at least attending one of Falmouth's organizing meetings. Details on times and locations can be gotten from Lionel Hall in Purchasing.

The Anti-Defamation League is a not-for-profit organization dedicated to defending democratic ideals, safeguarding civil rights, and combating prejudice, discrimination, and bigotry of all kinds.

— Jane MacNeil

## Recent Gifts and Grants

**The Pfizer Foundation** renewed a grant in the amount of \$27,500 in support of the *Living in the Microbial World* and *Life and Living in Space* Teacher Workshops in 2002.

**Howard Hughes Medical Institute** awarded a grant in the amount of \$24,000 to underwrite students accepted from the HHMI International Research Scholars Program to attend the course *Biology of Parasitism: Modern Approaches* this summer.

**National Institutes of Health** awarded the following grants:

- \$235,229 for "Characterization of the *Giardia lamblia* transcriptome." Andrew McArthur is the principal investigator.
- \$200,553 (first of five-year award totalling \$1,073,654) for "Logistical and technical support for NINDS at the Marine Biological Laboratory." Thomas Reese is the principal investigator.
- \$54,782 for "Book on calcium waves and patterns." Lionel Jaffe is the principal investigator.

**NOAA** awarded the following grants:

- \$24,908 for "Workplan for soliciting expert input on hypoxia research priorities." Roxanne Marino is the principal investigator.

**National Science Foundation** awarded the following grants:

- \$227,735 for "The response of carbon cycling in Arctic ecosystems to global change: Regional and Pan-Arctic assessments." John Hobbie is the principal investigator.
- \$75,000 for "Molecular Approaches to Microbial Biodiversity aka Microbial Diversity Course." Caroline Harwood is the principal investigator.
- \$14,345 for "LTER: Plum Island Sound Comparative Ecosystem Study (PI-SCES): Effects of changing land cover, climate and sea level on estuarine trophic dynamics." Charles Hopkinson is the principal investigator.
- \$6,375 for "Aquatic ecosystem responses to changes in the environment of an Arctic drainage basin." John Hobbie is the principal investigator.

## Employee News

### *New Employees*

*Please welcome the following new employees:*

**Steve Biller**, Research Assistant, Bay Paul Center  
**Al Chan**, Post-doctoral Scientist, The Ecosystems Center  
**Heather Dalpe**, Research Assistant, Veterinary Office  
**Chris DeMatos**, Web Database Programmer, ISD  
**Dimitar Iliev**, Graduate Student, Marine Resources Center  
**Corey Lawrence**, Research Assistant, The Ecosystems Center  
**Steven Roberts**, Post-doctoral Scientist, Marine Resources Center

### *Benefits Buzz*

*Are you saving enough for retirement?*

Most people will need additional sources of retirement income over and above a retirement plan and Social Security to maintain their standard of living after they retire. TIAA-CREF's Group Supplemental Retirement Annuities (GSRAs) are tax-deferred annuities that help you build more savings for the future.

### *Calculating your own retirements costs*

It's easier than you think. Just use the "new and improved" Retirement Illustration Calculator. This tool is loaded with features to help you plan for a comfortable retirement. Log onto [www.tiaa-cref.org](http://www.tiaa-cref.org) and create, view, and print out your own custom folios using your own performance assumptions. For personal retirement services contact the telephone counseling center at 1-800-842-2776. To open a GSRA or to change your current salary reduction contact Linda Snow, Human Resources Coordinator.

Because tax-deferred investment plans are so attractive, the Internal Revenue Service limits the amount you may contribute. In 2002 the maximum is generally \$11,000 but even a few dollars a paycheck can grow into a significant accumulation over time. Remember: saving an additional \$20 a week through your GSRA could make a big difference in funding your retirement.

## MBL/NLM Summer Courses

The Marine Biological Laboratory and the National Library of Medicine offer the following courses this summer. Please contact Jean Monahan at x7341, or [jmonahan@mbledu](mailto:jmonahan@mbledu) to register.

7/23, Tools for Finding Funding  
8/13, Locating Health Science Info  
8/27, Introduction to PHP

8/6, UBIO  
8/20, Intro to MBL Webmail  
9/3, Article Alerting Services

# 2002 Summer Shuttle Schedule

<b>Effective</b> <b>June 3– August 30</b>	<i>Leave</i> <i>Lillie</i>	<i>Leave</i> <i>Devil's Lane</i>	<i>Leave</i> <i>Lillie</i>	<i>Leave</i> <i>Devil's Lane</i>
	6:40 AM	6:30 AM	12:50 PM	12:59 PM
The MBL Shuttle Service is available for registered MBL personnel and other authorized users.	6:55*	6:45*	1:00	1:09
	7:00	6:49	1:10	1:19
	7:15*	7:04*	1:20	1:29
	7:20	7:09	1:30	1:39
	7:30	7:24*	1:40	1:49
	7:35*	7:29	2:00	2:09
	7:40	7:39	2:20	2:29
	7:50	7:44*	2:40	2:49
	7:55*	7:49	3:00	3:09
	8:00	7:59	3:20	3:29
<b>For Safety:</b> No fishing poles or animals allowed on vans or buses at any time.	8:10	8:04*	3:40	3:49
	8:15*	8:09	4:00	4:09
	8:20	8:19	4:05*	4:14*
	8:30	8:24*	4:20	4:29
	8:35*	8:29	4:25*	4:34*
	8:40	8:39	4:30	4:39
	8:50	8:49	4:40	4:49
	9:00	8:59	4:45*	4:54*
	9:10	9:09	4:50	4:59
	9:20	9:19	5:00	5:09
<b>Seat Belts and Car Seats:</b> Massachusetts law requires passengers to wear seat belts. Children under 5 years old, or weighing under forty pounds MUST use car seats. All passengers under age 16 MUST wear seatbelts.	9:30	9:29	5:05*	5:14*
	9:40	9:39	5:10	5:19
	10:00	9:49	5:20	5:29
	10:20	10:09	5:25*	5:34*
	10:40	10:29	5:30	5:39
	11:00	10:49	5:40	5:49
	11:20	11:09	5:45*	5:54*
	11:40	11:29	6:00	6:09
	11:50	11:49	6:20	6:29
	12:00 PM	11:59	6:40	6:49
Last shuttle for Devils Lane leaves at 7:40 PM, Mon. - Fri, and 11:40 AM on Saturday.	12:10	12:09 PM	7:00	7:09
	12:20	12:19	7:20	7:29
	12:30	12:29	7:40	7:48
	12:40	12:39		
	12:40	12:49		
*Express Bus Schedule	12:30	12:29	7:40	7:48
	12:40	12:39		

## Saturday Morning Schedule

<i>Leave Lillie</i>	<i>Leaves Devil's Lane</i>	<i>Leave Lillie</i>	<i>Leave Devil's Lane</i>
8:00 AM	8:08 AM	10:20 AM	10:29 AM
8:18	8:26	10:40	10:49
8:36	8:44	11:00	11:09
8:54	9:03	11:20	11:29
9:13	9:21	11:40	11:48
9:31	9:57		

## MBL Parking Policy

As we all know, parking is extremely limited in Woods Hole. The MBL provides its staff and visiting students and scientists with parking either on campus or at the Devils Lane lot on Oyster Pond Road. As always, we ask that MBL employees be “good neighbors” and refrain from parking on local streets.

1. The MBL shuttle program is in effect through September (see the schedule above.)
2. Walking paths lead from the Devils Lane Parking Lot to the bike path. (The walk from the parking lot to Woods Hole takes about 20 minutes).
3. Reserved parking on campus for MBL carpools is available year-round.
4. People who regularly bicycle to work may use the bike garage and shower facility (in the Ebert Hall basement) free of charge.

Also please note:

- Raffle tickets are available on the shuttle vans. Winners are selected weekly and receive week-long campus parking privileges. (The more you ride the shuttle, the more opportunities you have to win!)
- Parking on the Bar Neck Road Property is for Special Events only. MBL staff may not park here.
- On-campus parking passes (available in the Facilities Office) are provided for occasional daytime doctors appointments.
- Parking rules are being strictly enforced. Violators will be — and are being— towed.

If you have not received your copy of the 2002 parking policy, please contact Rich Cutler at x7454, or [rcutler@mbl.edu](mailto:rcutler@mbl.edu).

## New Service: MBL/WHOI Library Wireless Network

The MBL/WHOI Library announces the availability of a wireless network throughout the stacks! This network allows registered MBL library patrons to connect to the Internet from anywhere in the Library without cables or a data port. The Library has a limited number of wireless cards & laptops available for daily use within the Library. (The MBL Stockroom also sells wireless cards.)

For details about this service, please consult the Library website <<http://www.mblwhoilibrary.org/wireless/>> or contact Amy or Eleanor (x7002) for additional information or to borrow a card/laptop.

Please note that as part of this new service, we have declared the the Grass Reference Room a 'technology free zone' — thus creating a haven for those who wish to read without the clattering of keyboards.

## Calling All Entries!

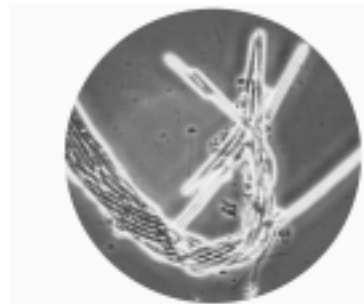
### *The 2002 MBL Photography/Photomicrograph Contest is Underway*

The deadline for this year's photography/photomicrography contest is Friday August 2nd. The contest is sponsored and prizes are provided by Carl Zeiss, Inc.

The contest is open to all registered members of the MBL Community and MBL Associates. (Employees of imaging and microscopy companies are not eligible- sorry).

The two entry categories accommodating both color and black & white images are:

\* Scientific Imaging-including micro and macro images taken at the MBL or its field sites



\* MBL-at-Large-images of people, places, research organisms, and activities, etc., of the laboratory and its field sites

Contestants may submit up to three entries per category.

For more information go to <http://www.mbl.edu/communications/public.outreach/photo.contest/index.html>. Entry forms are available in the Communications Office, Candle House 200, x7423.

*MBL Monthly* is published by the  
Communications Office.  
Editor: Pamela Clapp Hinkle  
Co-editor and Designer: Beth Ready Liles  
Please direct questions and comments to the  
MBL Communications Office,  
7 MBL Street, Woods Hole, MA 02543  
(508) 289-7423; [comm@mbl.edu](mailto:comm@mbl.edu)



# July 2002

Sunday	Monday	Tuesday	Wednesday	Thursday	Friday	Saturday
14	15	Whitman Society Reception- Jonsson Cntr.	Forkosh Lecture & Reception, 3:00 pm, Lillie Robert Weinberg, MIT	FORBES: William Newsome, Stanford  Gemma Trip & Chowder Dinner	FORBES: William Newsome, Stanford (no dinner)	MBL Associates Event Speaker: Jelle Atema
21	22	Martha's Vineyard Event- Edgartown YC Lunch Lecture/ Children's Event - PM Speaker: Bob Barlow	Annual Bioethics Lecture 4:00 pm, Lillie Speaker: Tom Murray, Hastings Inst.	25	Parpart Lecture (AM), Michael Brown  FEL: Michael Brown, U. Texas	GFP and Aequorin: Discovery and Impact on Modern Biology --a symposium in honor of Osamu Shimomura Lillie Auditorium, 1:30 - 5 PM
28	29	30	Wianno Club Event - Osterville Speaker: John Dowling	31		

# August 2002

Sunday	Monday	Tuesday	Wednesday	Thursday	Friday	Saturday
					FEL: Steven Hyman, Harvard University	
				1	Photo Contest Deadline!	3
4	5	6	Nantucket Event Children's Event afternoon: Evening Lecture Atheneum; Speaker: Bob Barlow	8	Corporation Meeting  FEL: Dan Barry, NASA  Trustees Dinner	Trustees Meeting
11	12	13	Photo Contest Awards and Exhibit, 5 PM Meigs Room	15	Gemma Trip/Chowder Dinner  FEL: Tim Hunt, Cancer Research UK, Clare Hall Labs	17
18	19	20	21	22	23	24
25	26	27	28	29	Sager Lecture 8:00 pm	31